

MONTHLY MEMBERSHIP PROGRESS REPORT

LOCATION INDIA

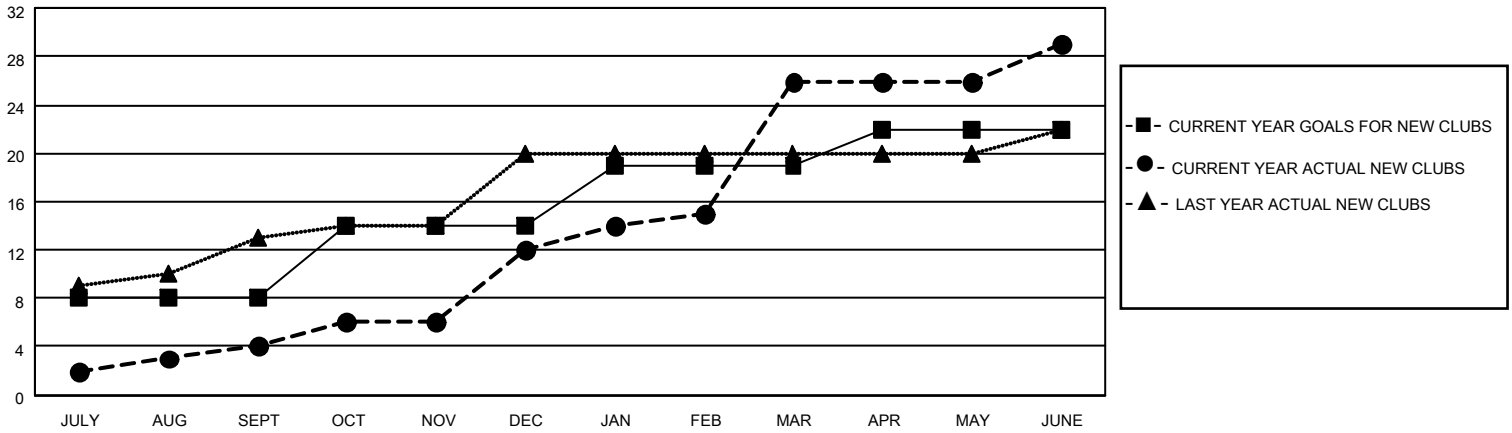
District 321 D

Results as of: 6/30/2022

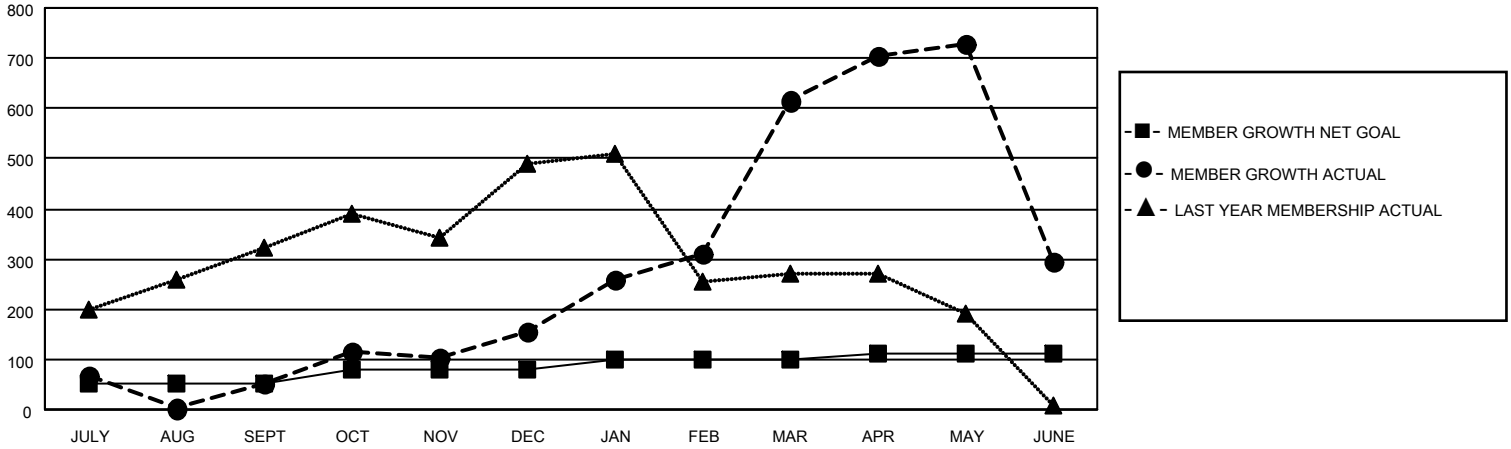
Clubs			
RESULTS FOR 2021-2022			
QUARTER	NEW CLUB GOAL	NEW CLUBS	DROPPED CLUBS
JULY/AUG/SEPT	8	4	4
OCT/NOV/DEC	6	8	3
JAN/FEB/MAR	5	14	2
APR/MAY/JUNE	3	3	4

Members			
RESULTS FOR 2021-2022			
QUARTER	MEMBER GROWTH NET GOAL	MEMBER GROWTH ACTUAL	DROPPED MEMBERS ACTUAL (including transfers)
JULY/AUG/SEPT	50	312	212
OCT/NOV/DEC	30	413	251
JAN/FEB/MAR	20	760	184
APR/MAY/JUNE	10	486	759

GOALS AND ACTUAL NEW CLUBS CUMULATIVE



GOALS AND ACTUAL MEMBERS CUMULATIVE



DROPPED CLUBS: 13

137 CLUBS OF 173 ADDED 1 OR MORE NEW MEMBERS

GENDER DISTRIBUTION

DROPPED MEMBERS

DECEASED	25
CLUB CANCELLED	241
OTHER	1,140
TOTAL	1,406

[CLICK HERE FOR CUMULATIVE MEMBERSHIP DATA](#)

MALE	3,206 (71.23%)
FEMALE	1,295 (28.77%)
NON BINARY	0 (0.00%)
PREFER NOT TO ANSWER	0 (0.00%)

TOTAL FAMILY UNIT MEMBERS 2,606

FAMILY MEMBERS PAYING HALF DUES 1,561